

Application Note

Subject: **Update Firmware of CDF600-03 via Packageloader 2.7**

SICK Product: CDF600-0300 EtherCAT

Department: GBC Identification & Measuring

Creation Date: 3th September 2019



Version history

Version	Date	Author	Remarks
1	9/3/2019	BU81 Application Engineering	Initial Version

1. Content

2.	General information	2
3.	Update Process	2
3.1.	Set CDF600-03 in right mode and connect to PC.....	2
3.2.	Start Packageloader and connect with CDF	2
3.3.	Browse for Firmware File (*.fwp) and for the keyfile (*.key).....	3
3.4.	Start Update and Login.....	3
3.5.	Error window.....	3
3.6.	Download Firmware	4
3.7.	Final Installation.....	4

2. General information

For the Update of a CDF 600-03xx (EtherCat), you must use the package loader V2.7. Sopas cannot be used for this update.

Time for Firmware download via serial aux is approximately 5 min.

For this update a cable connection from CDF600-3 to your PC is necessary. Therefore there are two cable possibilities:

- M8 to D-Sub, 9 pole cable SICK PN 6021195
- M8 to USB cable SICK PN 6034574

Please be aware that the CDF in Update mode cannot communicate with EtherCAT.

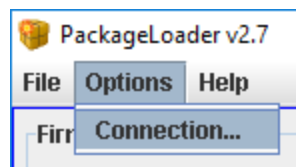
3. Update Process

3.1. Set CDF600-03 in right mode and connect to PC

- To update the CDF600-03 EtherCAT you have to set the Mode switch to Mode *E*.
- After this you need to reboot the CDF (Power Cycle) so that the CDF saves the right mode.
- If the CDF is working in this mode, there is no Bus communication possible.
- Connect the CDF afterwards with your PC (using one cable mentioned in chapter 2).

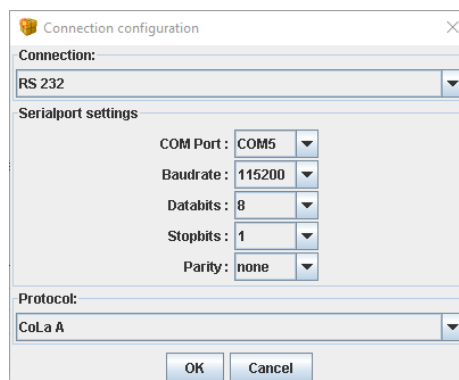
3.2. Start Packageloader and connect with CDF

- Start the Packageloader V2.7 (it only works if Packageloader was separately installed)
- Then select under *Options* → *Connection* (see picture 1)



picture 1

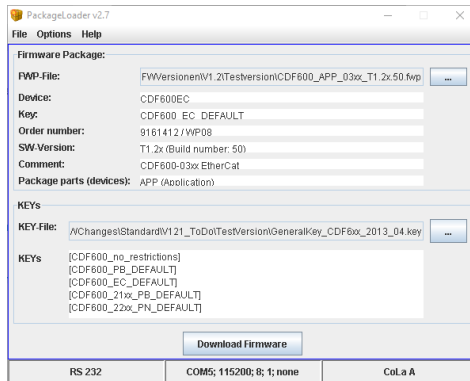
- The *Connection configuration* Window opens. Now the communication Parameters to connect to the CDF600-03 have to be set (see picture 2).
 - **Connection:** *RS232*
 - Select the corresponding **COM Port** your CDF is connected to your PC
 - **Baudrate:** *115200*
 - **Databits:** *8*
 - **Stopbits:** *1*
 - **Parity:** *none*
 - The **Protocol** has to be set to *CoLa A*



picture 2

3.3. Browse for Firmware File (*.fwp) and for the keyfile (*.key)

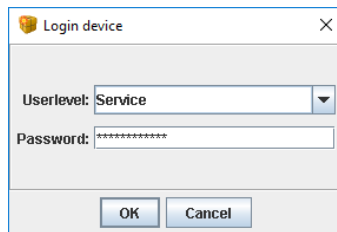
- In the *Firmware Package* menu (see picture 3), browse for your firmware file and for the Keyfile.
- If entered, move your Window to **the left side** of your screen to make sure that you see all following dialogboxes which are displayed on right side.



picture 3

3.4. Start Update and Login

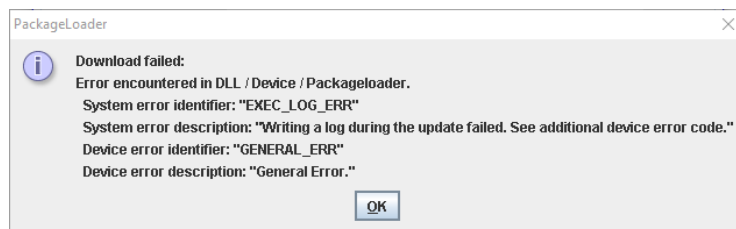
- Start the Update by clicking the button: *Download Firmware*.
- The *Login device* window will open (see picture 4).
- Logging with *Userlevel: service* and *Password: servicelevel*



picture 4

3.5. Error window

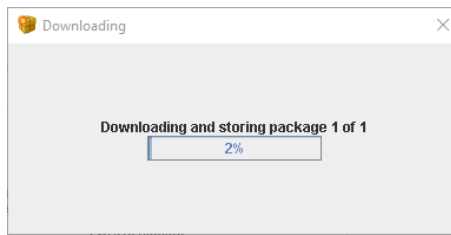
- The Error shown in picture 5 may occur during the first download.
- Please click okay and click again on the button *Download Firmware*.
- A new Login with *Userlevel: service* and *Password: servicelevel* will be necessary. After that the download starts.



picture 5

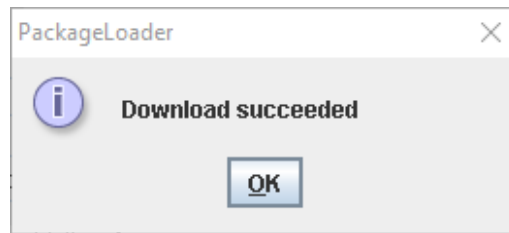
3.6. Download Firmware

- The firmware update will need about 5 minutes (see picture 6).



picture 6

- When the firmware update is completed the window as shown in picture 7 is opened and the device reboots.



picture 7

3.7. Final Installation

After update was successful, please select the needed Mode via the Mode switch and reboot (power cycle the CDF). Check that the device boots up correctly by watching the startup message and check the device in your system.