



LMS4000 – SAMPLE DATA

SICK
Sensor Intelligence.



In this tutorial, we'll present some sample data from the LMS4000.

1. Example of LMDscandata
 2. Example of a PointCloud
-

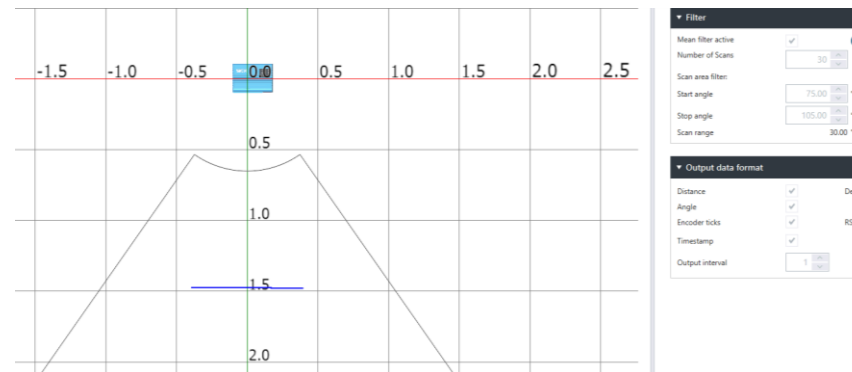
LMS4000

SAMPLE DATA LMDSCANDATA

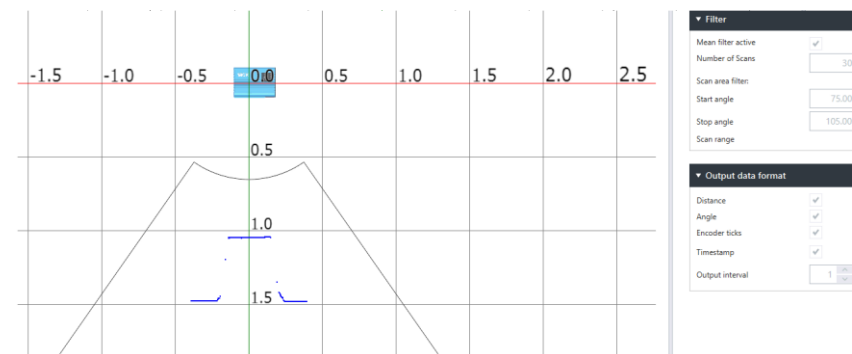
In the first example we show an easy scenario. In picture one SOPAS visualizes a small area of the floor. The second pictures shows a small chair. The movement from picture one to picture two is recorded with the SOPAS Terminal in a lot of scans (file: LMS4000_CoLaB_Data.log).

For a better understanding, the file “LMS4000_CoLaB_Data_one scan.log” explains one scan in detail with a sample calculation. Please also refer to the [telegram listing](#).

1



2



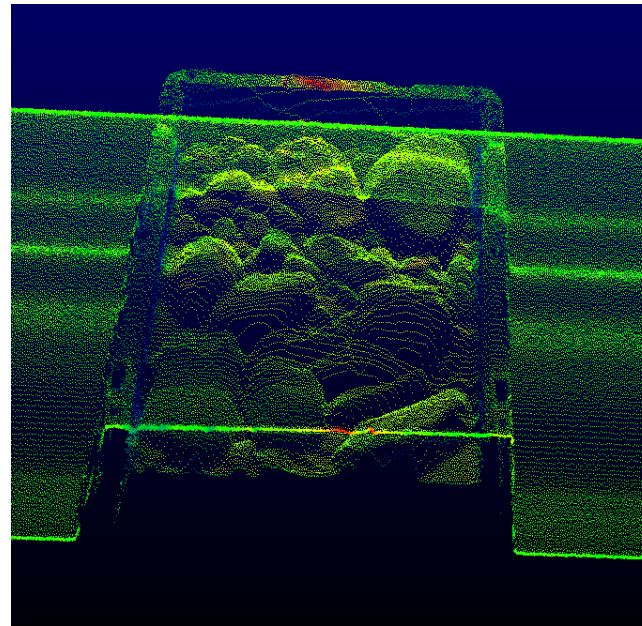
LMS4000_CoLaB_Data.log



LMS4000_CoLaB_Data_one scan.log

In the second example we show a PointCloud which was recorded with the [LMS4121](#) in combination with a [SIM](#).

The recording height is 1m. Under the black box (with stones) there is an encoder to get the position data. A meanfilter (x10) was applied and the output frequency was 60Hz.



pointcloud.pcd



For technical questions please use:

<https://supportportal.sick.com/>